

windream 5.0



**All Novelties at one Glance**

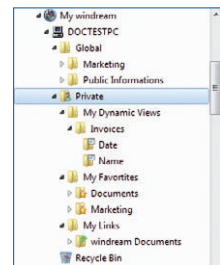


# windream 5.0 – All Novelties at one Glance

With windream 5.0, windream GmbH presents the brand-new version of the ECM-system windream, with improvements in many sections. But not only that – many modules already familiar from earlier versions have been revised, adjusted and modernized in matters of user-friendliness as well as with regard to new technologies. With windream 5.0, ECM-users are offered a modern, highly-developed and user-friendly tool for managing their company's entire knowledge. The flyer at hand wants to provide a first overview of the new features.

## Dynamic Views on Documents with “My windream“

With “My windream“, extensive stocks of documents saved in the windream ECM-system can be displayed virtually and individually. The virtual folders present the document stocks of the ECM-system as a dynamic view, based on the document properties saved with the documents in windream. The most important characteristic of this feature is the fact that the folder structure under which the documents are stored in the ECM-system is not changed. There are numerous areas of use for My windream – individuality is unlimited.



## Single Instancing: No more Doublets

A doublet check – the so-called Single Instancing – is now possible when archiving documents. The corresponding windream storage for the doublet check can be activated in the windream Management Console.

## User-Specific Recycle Bins



In windream 5.0, a so-called windream Desktop Recycle Bin is displayed on the Desktop. It contains all documents and folders deleted by the user. Via the Recycle Bin, users can recover documents they previously deleted without requiring specific administrative rights. The administrator still keeps the right of irrevocably destroying documents.

## New Research Functions

The new windream research application offers new research functions. Next to a text search via all text contents, results can now also be sorted according to their relevance. In this context, text excerpts from the environment of the search term can be displayed.

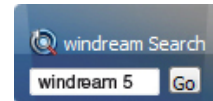
## Windows Sidebar Gadget for Index Values

Via a new Windows sidebar gadget, the index values of a document saved in windream and currently highlighted in the Windows Explorer can be displayed clearly and conveniently. Users can individually configure the index contents displayed in the sidebar window.




## Sidebar Gadget for the windream Find Function

windream 5.0 offers users a new sidebar gadget for the windream find function. After entering the desired search term into the input field of the sidebar application, windream automatically conducts a fulltext search in the saved documents and displays the results in a windream result list.



## Always Well-Informed with the windream Notifier

 Due to its plug-in system, the windream Notifier can be used in many situations. It can e.g. be used in the context of a follow-up function or for further notifications concerning windream.

## Substitute Rules

Users can now create and configure their own substitute rules, or those of other users.



## Up to Date with Windows 7 and 64-Bit

Of course, windream 5.0 is completely compatible with Windows 7. Furthermore, windream 5.0 supports all 64-bit systems in various configurations.

## Power for the Proxy

The windream Proxy Server was revised in several points to improve communication between the windream main Server and the Proxy. In the new version of DCOM-communication, a considerably smaller amount of commands must be sent from one location to the other. A further improvement in performance is represented by the compression of files.

## Automatic Inheritance

Contents of global vector fields can automatically be applied by a parent folder. Inheritance settings can be configured separately for documents and folders.

## Delayed Changing of Indices

For each document type and index, you can configure whether the contained meta-data may still be changed, if the document is a pre-version, if the document is not editable anymore, or if the document is archived.

## New Icons, Consistent Design

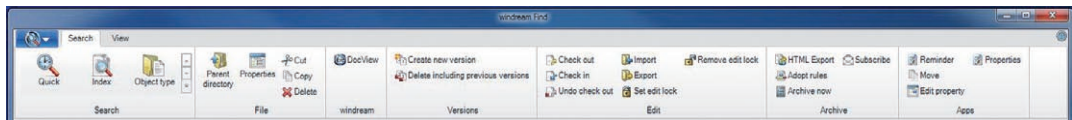


A completely new icon design was developed for windream 5.0, guaranteeing a consistent layout of the entire windream product portfolio. Among other things, the windream find function, the document preview windream DocView and the single windream-specific commands of the context menu have been supplied with entirely new icons. The design is based on the principle “Form follows function“, meaning that the new design supports a user-friendly handling of all windream components.



## windream Search – New Design, More Clarity

The windream find function has acquired a completely new design. The most noteworthy novelty is the integration of the windream menu bar and of the result list tool bar into a ribbon bar.



Furthermore, several searches can now be launched from one window in a structured way, allowing users a better overview of their executed search inquiries and the corresponding result lists. The display of specific information in the result list can be configured as desired.

## Sneak a Peek – the New Preview



The revised and extended version of the document preview “windream DocView“ unites technological and user-specific novelties. The user can now control and configure the preview as a multi-function bar in the form of a ribbon design or via the familiar toolbar.

Further information can be found under [www.windream.com/windream5](http://www.windream.com/windream5).

windream projectpartner  
Systemshouse for data- und documentmanagement

**CPM.DE GmbH**

Rönneterring 11  
D - 41068 Mönchengladbach  
Phone: +49-2161-3036405  
E-Mail: [info@cpm.de](mailto:info@cpm.de)



**Managing**  
**Documents** [www.cpm.de](http://www.cpm.de)