

windream DocView



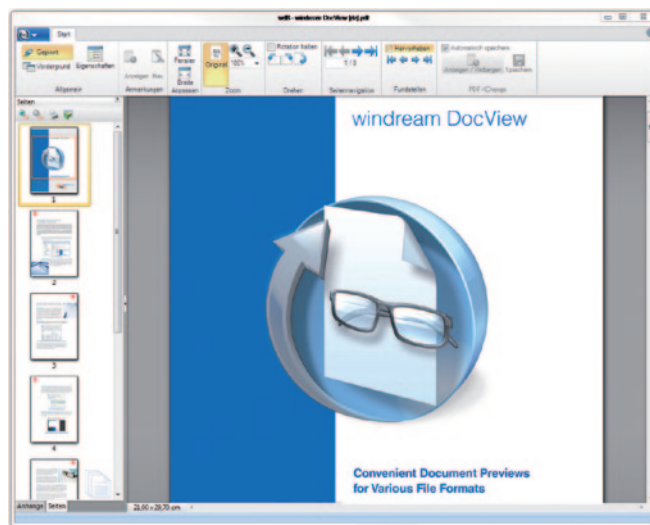
**Convenient Document Previews
for Various File Formats**






Convenient Document Previews for Various File Formats

You want to take a quick glance at a Word document, an Excel sheet or a Power-Point presentation without having to launch the corresponding Office program? You work with PDF files on a regular basis? Or maybe you regularly receive image files in 'exotic' formats and do not have an adequate application program installed. – There is a convenient solution for all these cases: windream DocView, a quick and efficient file viewer which can display an incredible variety of formats.

Say goodbye to the bothersome installation and loading of various programs for reading documents. With windream DocView, you have everything under control – with one single program!






Preview for a PDF document in windream DocView

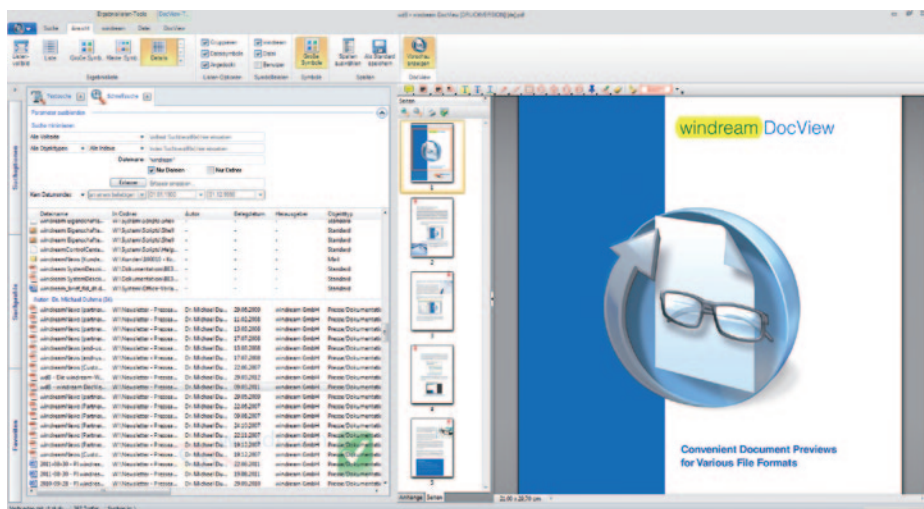
windream DocView allows you to display the contents of selected documents regardless of the application intended for the file format. The **integrated search function**  even allows you to search for specific text passages within documents. The retrieved passages will be **color-coded** in the display interface  and are thus **conveniently recognizable** .





The convenient configuration even allows a user-specific adjustment of the document preview – to help you keep track of things at all times.




A further feature: documents displayed in windream DocView can be assigned individual **annotations**. These annotations can be centrally stored and managed in windream. The annotations are, so to speak, the digital equivalent of the popular sticky notes. Unlike the latter, however, digital annotations can be retrieved **at the click of one button**  at any time and regardless of their amount, they will never get lost, and they even can – if desired – be read by authorized users only. The annotations can also be **saved as templates**  and re-used whenever required.

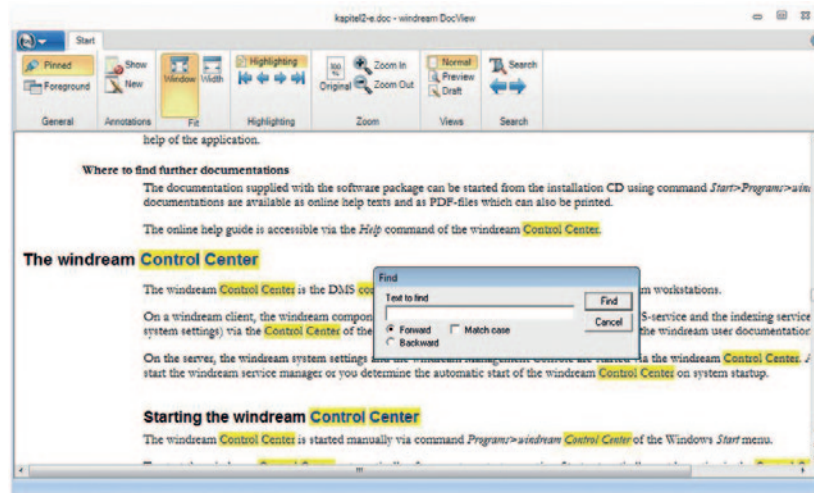
Quick and convenient. The document preview can be launched via item “windream DocView”  from the **Explorer context menu** or via a **windream search result list**.




A preview, integrated into the result list of the windream search function

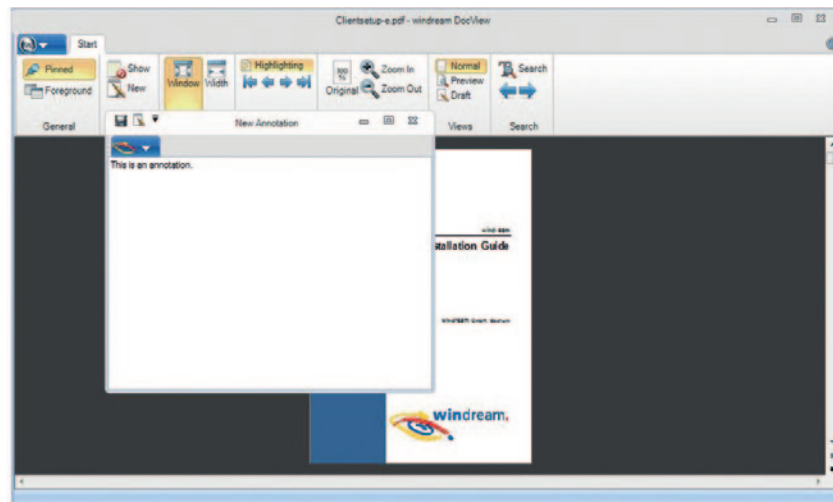
The program displays the currently selected documents with their original layouts; the corresponding applications need not be opened. The preview window can be **“fixed”**  to your interface and will then always be **displayed in the foreground** . This way, the preview function need not be activated for each document separately while browsing the ECM system or a result list.

Efficient searches and display of locations of retrieval. Via icon “Search for Text” , you can retrieve **specific text passages** within documents. Simply enter the desired search term into the dialog field and launch your search. Once the search is finished, open the preview via the result list of retrieved documents. The retrieved passages will be **color-coded** . Via corresponding navigation icons , you can browse the text for further matches.



Text search with color-coded locations of retrieval

Stop the sticky note chaos! windream DocView allows you to **capture annotations**  on currently displayed documents via the document preview function, e.g. in order to comment on certain contents of a document or to alert other users to them.



Annotations can be positioned individually and can be saved to windream as documents – including the integrated windream rights management.

The annotations can be **positioned individually** within the document windows. Annotations are saved and managed within the ECM system **like regular windream documents**. Users who want to access archived annotations must be authorized via the **windream rights concept** .

This way, you can be sure that only correspondingly authorized users can see and edit the annotations. If an annotation is opened via a result list or via the list view of the Windows Explorer, windream will automatically display the corresponding original document via the document preview.

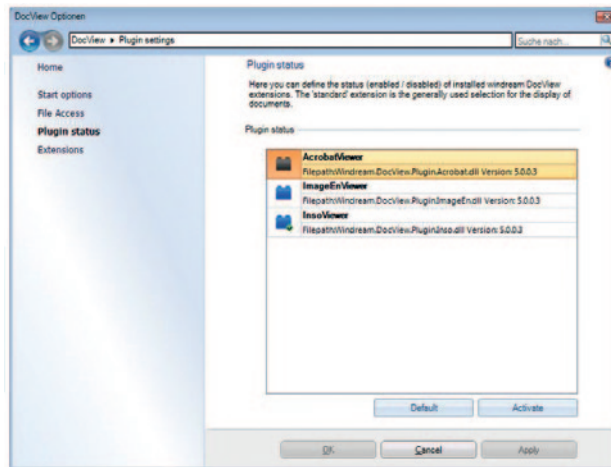


Wide variety of formats. windream DocView supports an almost **unlimited amount** of file formats. This of course includes all classical Office document formats such as Microsoft Word, Excel and PowerPoint files, but also PDF files and various graphics and image formats, such as JPEG, GIF or EPS. Even documents from **highly specialized applications**, such as CAD programs, can be viewed conveniently and without any further configurations via windream DocView.

Plug-in compatibility. An integrated configuration tool allows you to add further viewers in addition to the default viewer software – for example, Adobe Acrobat for PDF documents, ImageEn, PDF-XChange (windream 5.5 or higher), Inso, or the Windows Preview (windream 5.5 or higher). The additional viewers can be **configured as plug-in modules** and assigned to certain file types, to be configured via windream DocView. Even **e-mail attachments** or the contents of **ZIP archives** can be conveniently viewed via specific plug-in modules.

Key Features:

- Convenient viewer for document previews
- Can optionally be used outside of a windream environment
- Plug-in technology for the integration of various file viewers
- Individual configuration of plug-in modules and settings
- Integrated search functions with color-coding for locations of retrieval
- Annotation function for documents

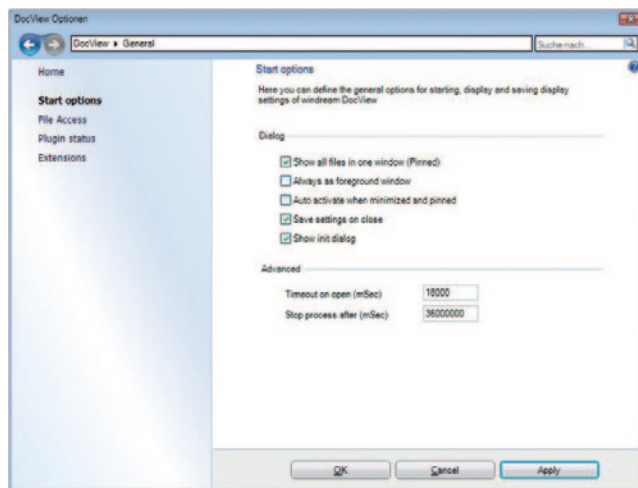


Settings for the default plug-in modules for the display of specific file types

The **plug-in technology** allows you to configure a fixed viewer software for viewing certain file types, or their associated documents.

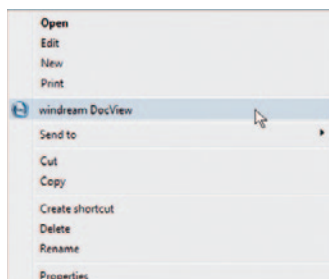
Extensive configuration options. The plug-in modules and the multitude of available viewer settings can be **configured conveniently** and in accordance with the individual requirements of the user, via a user-friendly configuration tool. The available settings include:

- the default interface to be displayed on starting windream DocView,
- the behavior of the viewer on accessing files,
- the status and settings of the installed plug-ins, and
- the configuration of the file extensions to be used by windream DocView for the display of documents via certain plug-ins.



Settings for the start options to be used on opening windream DocView

windream DocView universal – also outside of the windream ECM system. windream DocView has not been designed exclusively as a document viewer for documents within the windream ECM system or the folder structure of a windream drive.



windream DocView also outside of the windream ECM system

An optional license extension allows you to **use the viewer outside of a windream environment**, e.g. as a viewer for documents on local and external drives.

This so-called “offline” version also allows the configuration of windream DocView as a default program for the display of specific file types. Furthermore, the viewer can also be integrated into third-party software applications. The potential areas of use for windream DocView are therefore **nearly unlimited**.





Rely on the Technological Market Leader

If you plan to invest in an innovative, efficient and easy to handle ECM-system, or if you need further information on how to optimise your business processes concretely, we should get to know each other.

In the market sector of ECM-software suppliers, windream GmbH is the technologically leading manufacturer. With the windream ECM-system based on the patented Virtual File System technology (VFS), we have created an unrivaled tool for administering your complete company knowledge. Our software is easy to handle, effective, and future-proof. We have 20 years experience in successful software solutions development for enterprises of any size. Medium-sized companies and multinational corporations as well rely on our top quality products and on our technological know-how.

Look and see!

windream GmbH

Wasserstraße 219
44799 Bochum
Germany

Phone: +49 234 9734-0
Fax: +49 234 9734-520

E-Mail: info@windream.com



Managing Documents

www.windream.com