

windream SDK



Easy system enhancements and software integrations with windream



Easy system enhancements and software integrations with windream

The open architecture of the windream ECM-system makes individual system enhancements and software integrations extremely easy. With the windream Software Development Kit (SDK), we offer experienced users a complete description of the windream object model, which has been designed to use the software interfaces efficiently. Customers and partners as well gain profit from the SDK, with which all ECM-components can be adjusted to individual needs.

Use the complex logics of the windream kernel to create your own functions, write new handlers for the new windream event service to automatise tasks, and implement client components (find options, result lists, directory browser) as ready to use modules in your own applications. Use the different examples described in the SDK for your own, individual solutions.

Documentation and help functions. The documentation of the windream SDK consists of more than 350 pages. Starting with a general survey on the windream object model, the documentation also includes advanced information like e.g. the description of the windream interfaces, the windream script module, the windream client components, the windream tool objects and an explanation of different, but most interesting add-on components.

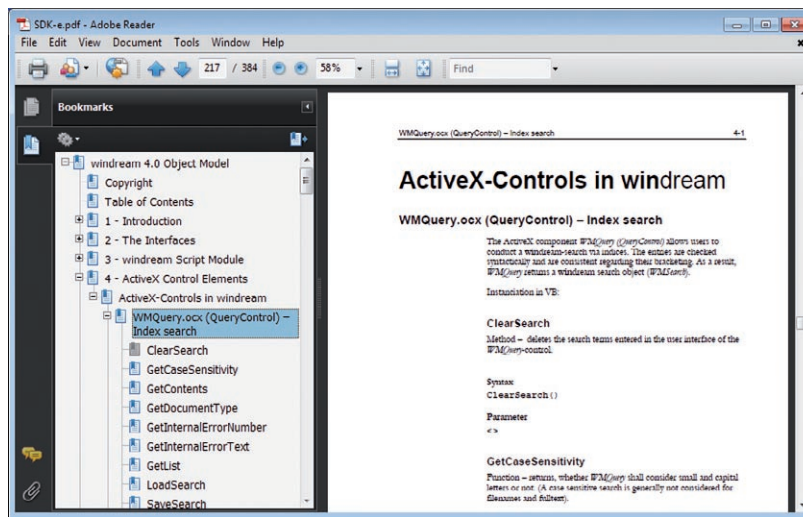


Here's an extract of the contents:

- Introduction to the object model
- Interfaces of the windream kernel
- The windream scripting module
- The windream Find control, the result control, and the index control
- The windream message handler
- The windream document viewer (DocView)
- The windream event handler

The complete documentation is extended by a help file in Microsoft help format. This way, each software developer can select the desired manual to make any specific information available immediately.

Examples in several programming languages. More than 100 examples in C++, C# (.Net), Visual Basic, Visual Basic Script and in Java Script from different application sectors all around the windream modules complete the documentation.



SDK documentation

You will find numerous examples concerning rights inheritance, check-out and check-in, locking documents, assigning document types and attributes, direct file input/output via the interfaces, find functions and many other examples. In addition to this, the SDK is also available as a Java-SDK, which is supplied with a Java-DCOM bridge.

windream SDK Viewer. The SDK now also contains a windream SDK viewer, which allows developers to simply browse in the interfaces and methods of the windream modules.

You can retrieve the interfaces and methods of the ActiveX control elements, of the search functions, the result list, the index control and of the folder browser here. Further on, all enumerations, the interfaces and methods of the windream kernel as well as the interfaces and methods of the windream event handler are presented here.

With the windream SDK viewer, you can now develop your applications much easier, quicker and more efficiently than before.

Performance features:

- Quick integrations by an easy to understand and comprehensive object model
- Efficient software development with automation objects and ActiveX-Controls
- Supports all common programming languages and development environments
- XML-support
- Documentation and SDK viewer
- Contains more than 500 interfaces and methods



Rely on the Technological Market Leader

If you plan to invest in an innovative, efficient and easy to handle ECM-system, or if you need further information on how to optimise your business processes concretely, we should get to know each other.

In the market sector of ECM-software suppliers, windream GmbH is the technologically leading manufacturer. With the windream ECM-system based on the patented Virtual File System technology (VFS), we have created an unrivaled tool for administering your complete company knowledge. Our software is easy to handle, effective, and future-proof. We have 20 years experience in successful software solutions development for enterprises of any size. Medium-sized companies and multinational corporations as well rely on our top quality products and on our technological know-how.

Look and see!

windream projectpartner
Systemshouse for data- und documentmanagement

CPM.DE GmbH

Rönneterring 11
D - 41068 Mönchengladbach
Phone: +49-2161-3036405
E-Mail: info@cpm.de

www.cpm.de



windream GmbH

Wasserstraße 219
44799 Bochum
Germany

Phone: +49 234 9734-0
Fax: +49 234 9734-520
E-Mail: info@windream.com

www.windream.com

Managing Documents